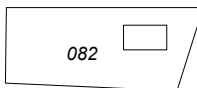
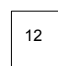
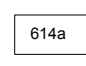


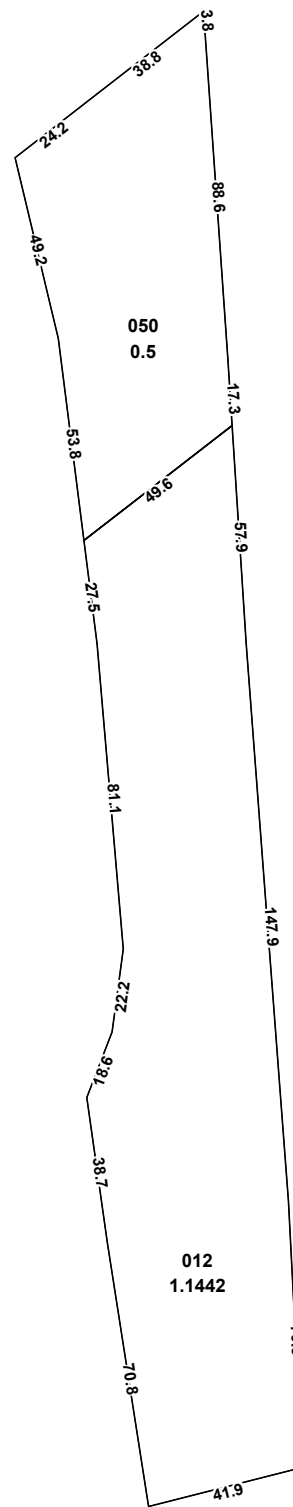
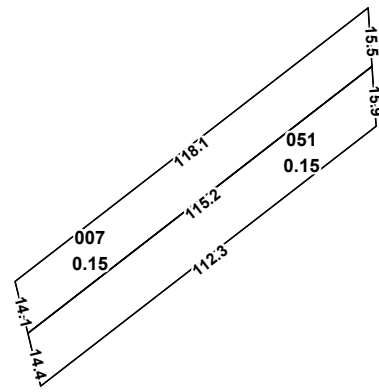
SEMNE CONVENȚIONALE

-  082 - numărul cadastral al parcelei
-  12  614a - numărul poștal
- 2730103 - codul cadastral al sectorul

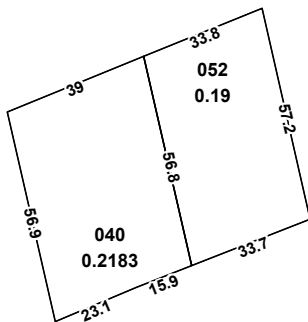
Directorul firmei \_\_\_\_\_/semnătura/  
Specialistul licențiat \_\_\_\_\_/semnătura/  
Planul cadastral întocmit de \_\_\_\_\_/semnătura/  
Data tipării: 14.06.2023

Scara 1:2000

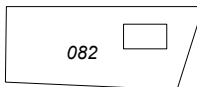


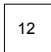
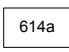


2730201



SEMNE CONVENȚIONALE

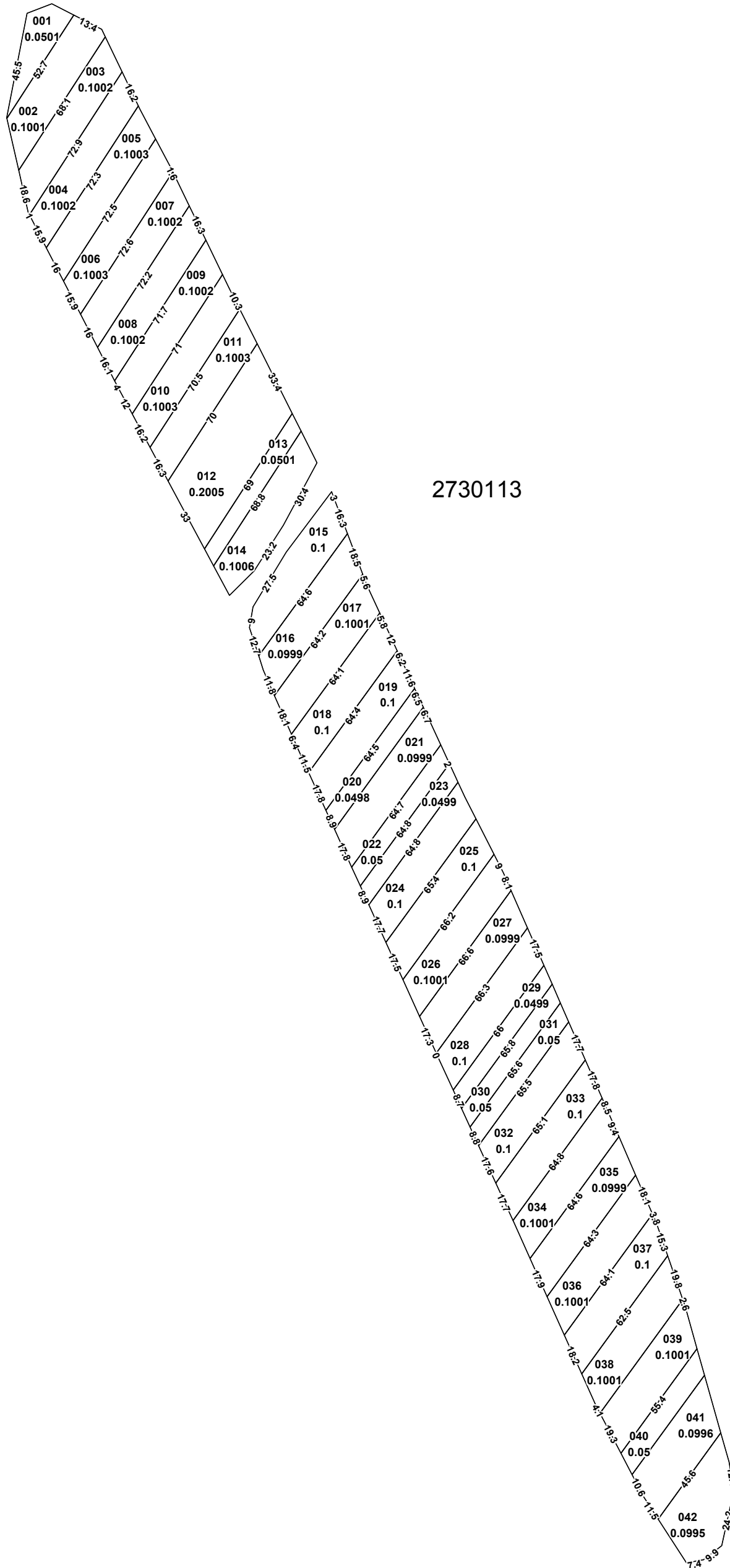
 082 - numărul cadastral al parcelei

 12  614a - numărul poștal

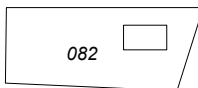

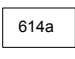
2730201 - codul cadastral al sectorul

Directorul firmei \_\_\_\_\_/semnătura/  
Specialistul licențiat \_\_\_\_\_/semnătura/  
Planul cadastral întocmit de \_\_\_\_\_/semnătura/  
Data tipării: 14.06.2023

Scara 1:2000

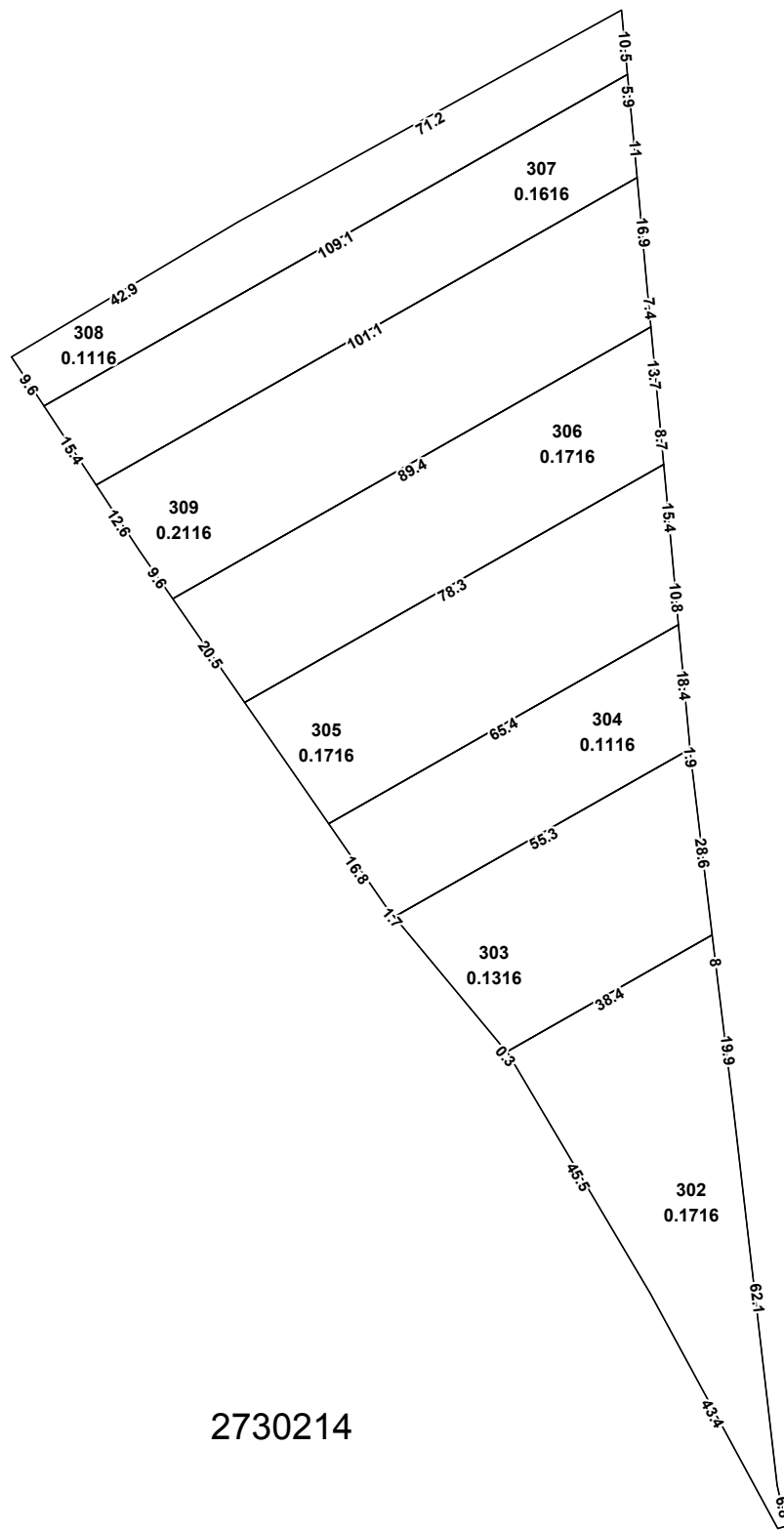


SEMNE CONVENȚIONALE

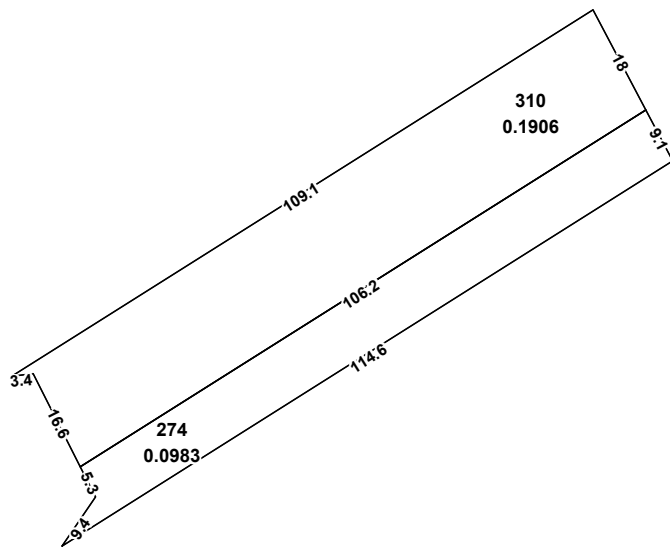
-  - numărul cadastral al parcelei
-   - numărul poștal
- 2730113** - codul cadastral al sectorul

Directorul firmei \_\_\_\_\_/semnătura/  
Specialistul licențiat \_\_\_\_\_/semnătura/  
Planul cadastral întocmit de \_\_\_\_\_/semnătura/  
Data tipării: 14.06.2023

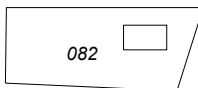

Scara 1:2000



2730214

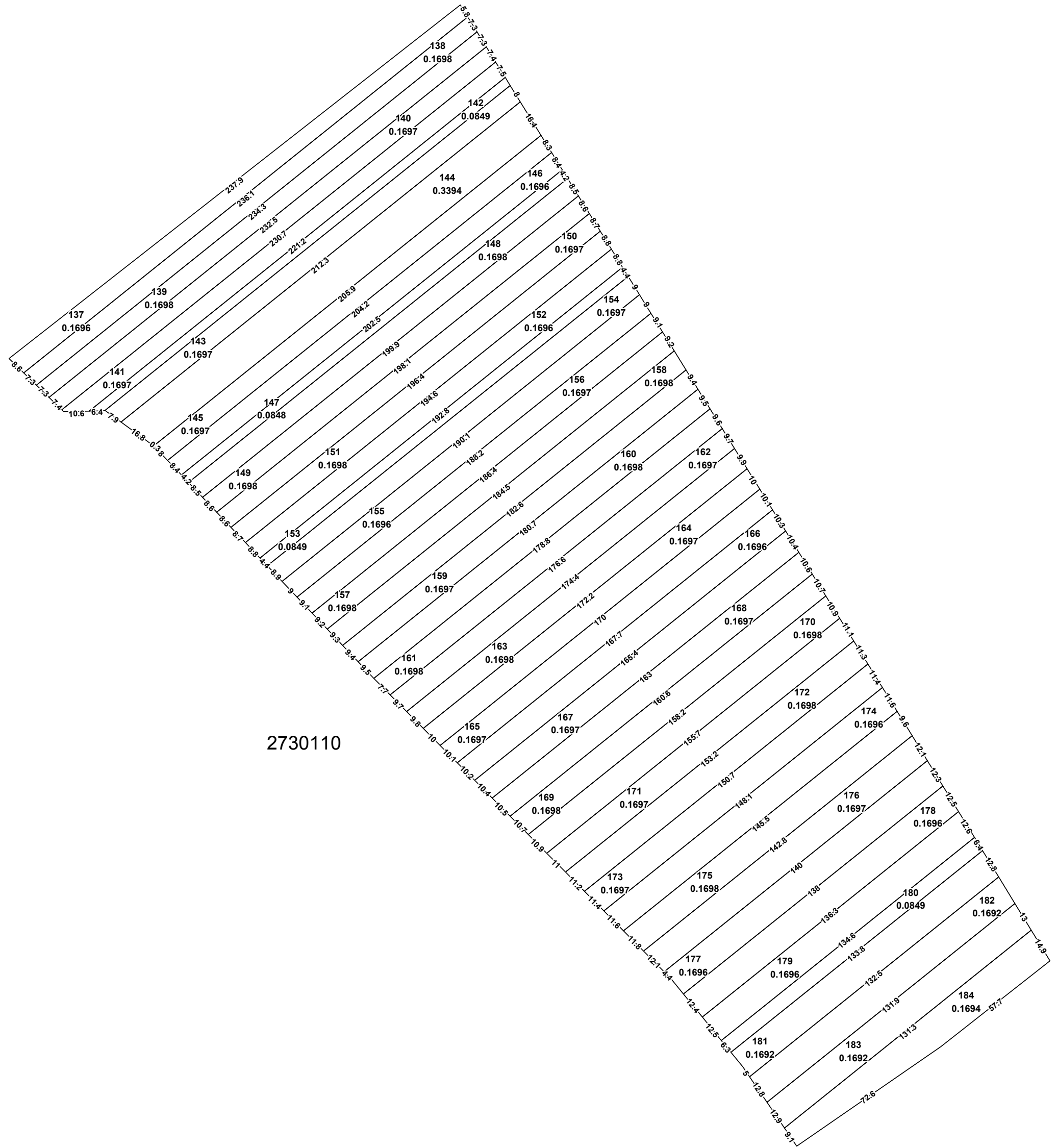


SEMNE CONVENȚIONALE

-  - numărul cadastral al parcelei
-  - numărul poștal
- 2730214** - codul cadastral al sectorul

Directorul firmei \_\_\_\_\_/semnătura/  
Specialistul licențiat \_\_\_\_\_/semnătura/  
Planul cadastral întocmit de \_\_\_\_\_/semnătura/  
Data tipării: 14.06.2023

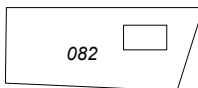
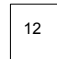
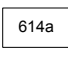

Scara 1:2000

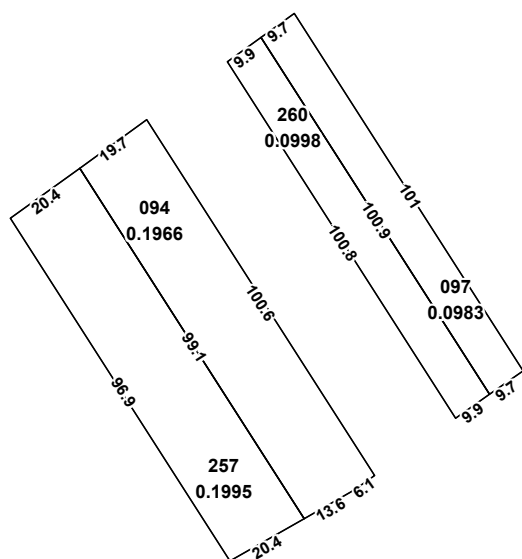


Directorul firmei \_\_\_\_\_/semnătura/  
Specialistul licențiat \_\_\_\_\_/semnătura/  
Planul cadastral întocmit de \_\_\_\_\_/semnătura/  
Data tipării: 14.06.2023

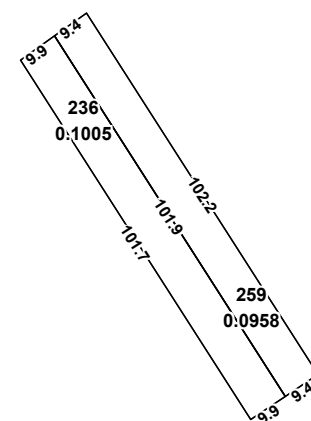
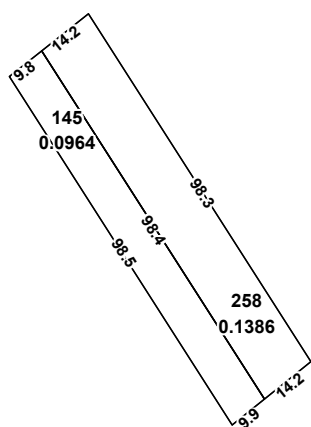
Scara 1:2000

SEMNE CONVENȚIONALE

-  - numărul cadastral al parcelei
-   - numărul poștal
-  - codul cadastral al sectorul



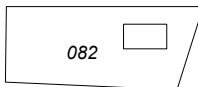

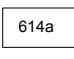
2730210



Directorul firmei \_\_\_\_\_/semnătura/  
Specialistul licențiat \_\_\_\_\_/semnătura/  
Planul cadastral întocmit de \_\_\_\_\_/semnătura/  
Data tipării: 14.06.2023

Scara 1:2000

SEMNE CONVENȚIONALE

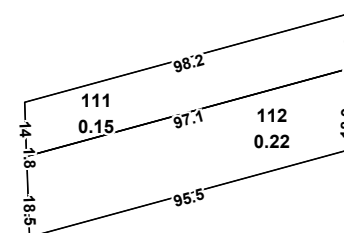
-  082 - numărul cadastral al parcelei
-  12  614a - numărul poștal
- 2730210 - codul cadastral al sectorul

Raionul Căușeni  
Sat. Ursoaia  
Sistemul de coordonate MR99

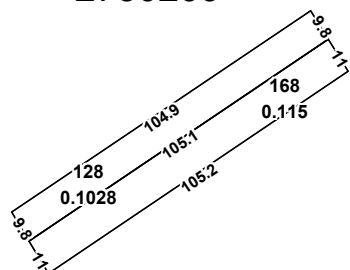
S.C. " TERRALEX GRUP " S.R.L  
PLAN GEOMETRIC 2730204, 2730209

Aprobat:  
Primăria sat. Ursoaia

2730204



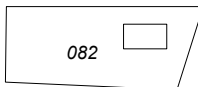

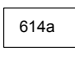
2730209

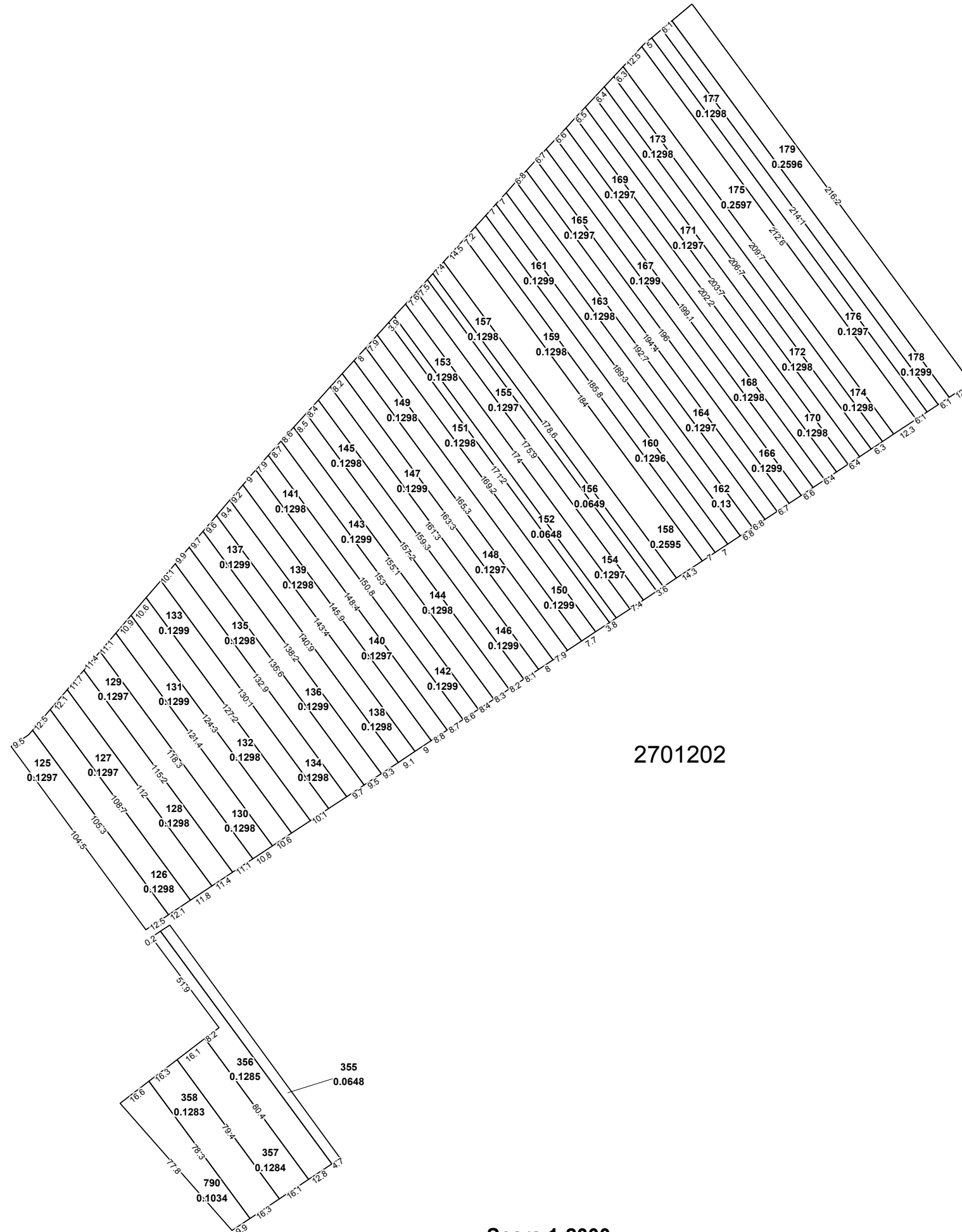


Directorul firmei \_\_\_\_\_/semnătura/  
Specialistul licențiat \_\_\_\_\_/semnătura/  
Planul cadastral întocmit de \_\_\_\_\_/semnătura/  
Data tipării: 14.06.2023

Scara 1:2000

SEMNE CONVENȚIONALE

-  082 - numărul cadastral al parcelei
-  12  614a - numărul poștal
- 2730204 - codul cadastral al sectorul

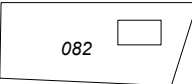

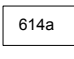


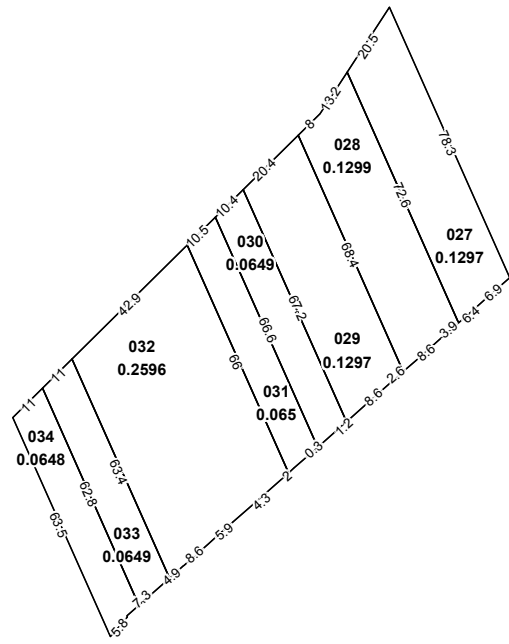
2701202

Directorul firmei \_\_\_\_\_/semnătura/  
Specialistul licențiat \_\_\_\_\_/semnătura/  
Planul cadastral întocmit de \_\_\_\_\_/semnătura/  
Data tipării: 14.06.2023

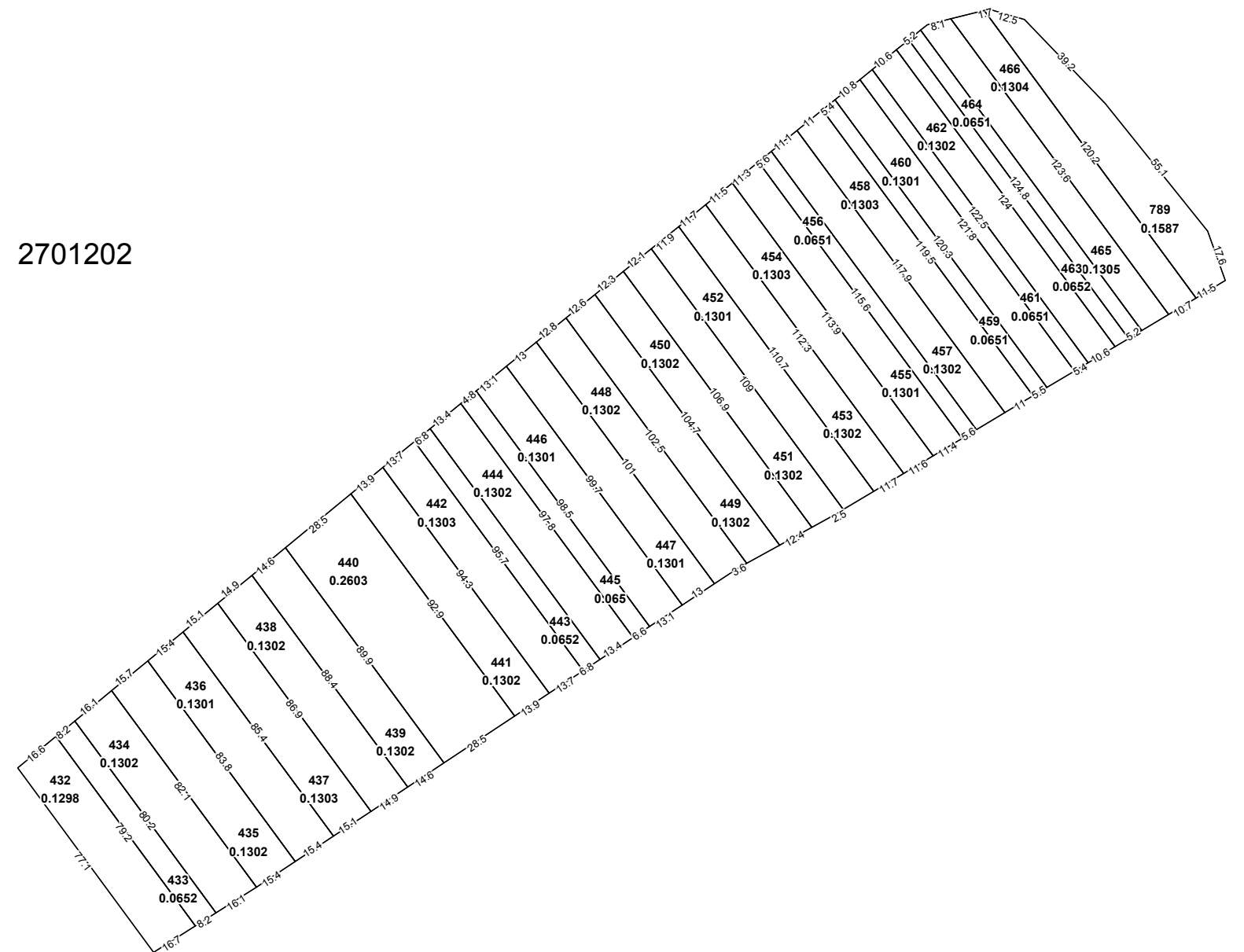
Scara 1:2000

SEMNE CONVENȚIONALE

-  - numărul cadastral al parcelei
-   - numărul poștal
- 2701202** - codul cadastral al sectorul



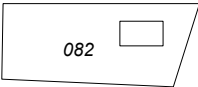
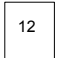
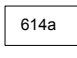
2701202

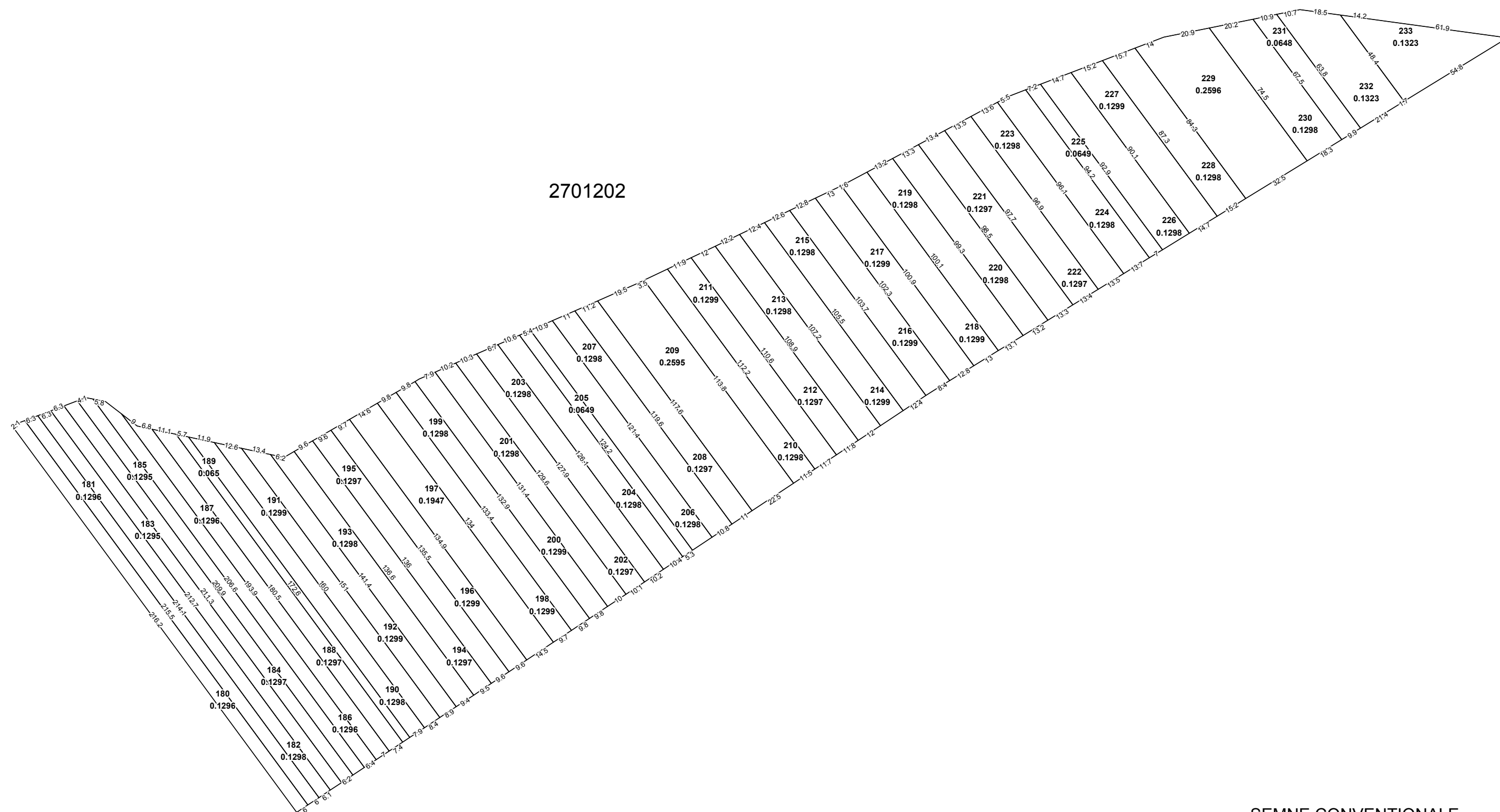


Directorul firmei \_\_\_\_\_/semnătura/  
Specialistul licențiat \_\_\_\_\_/semnătura/  
Planul cadastral întocmit de \_\_\_\_\_/semnătura/  
Data tipării: 14.06.2023

Scara 1:2000

SEMNE CONVENȚIONALE

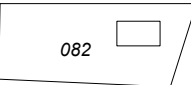
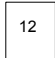
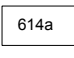
-  - numărul cadastral al parcelei
-   - numărul poștal
- 2701202** - codul cadastral al sectorul



Directorul firmei \_\_\_\_\_/semnătura/  
Specialistul licențiat \_\_\_\_\_/semnătura/  
Planul cadastral întocmit de \_\_\_\_\_/semnătura/  
Data tipării: 14.06.2023

Scara 1:2000

SEMNE CONVENȚIONALE

-  - numărul cadastral al parcelei
-   - numărul poștal
- 2701202** - codul cadastral al sectorul